

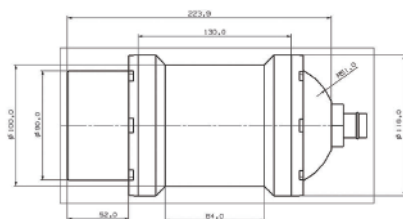


The HY1610 and the HY1611 underwater altimeters can measure and display the accurate distance from towed objects to the bottom of the water, thus protecting underwater instruments. Altimeters with operation frequency, 208 kHz and 446 kHz are offered for different depth range survey, and it's allowed to customize as required. At present, the HY1610 and the HY1611 are the most advanced and reliable underwater altimeters in China's domestic market.

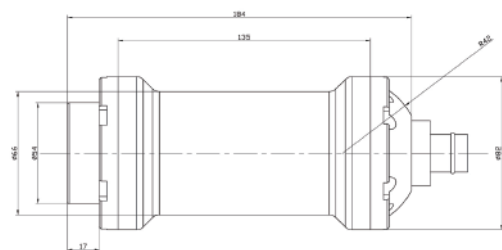
HY1610 / HY1611 Underwater Altimeters

Features

- Intelligentized bathymetry software with abundant function such as automatic survey controlling, dynamic signal detection, identification and tracking, real-time monitoring and controlling, which ensures high accuracy and reliability of the altimeters.
- Real-time display and storage of the bathymetric data that are transmitted via the serial port.



Dimensional Drawing of the HY1610



Dimensional Drawing of the HY1611



Specifications

Type	HY1610	HY1611
• Operation frequency	208 kHz	446 kHz
• Depth range	0.5~200 m	0.3~50 m
• Beam width	$\leq 8^{\circ}$	$\leq 6^{\circ}$
• Max depth	4000 m	4000 m
• Accuracy	1 cm \pm 0.1% measured depth	1 cm \pm 0.1% measured depth
• Transmission pulse	0.1 ~ 0.5 ms	0.05 ~ 0.4 ms (adjusted automatically)
• Power supply	18~36 VDC	22~26 VDC
• Length	248 mm	208 mm
• Diameter	116 mm	82 mm
• Weight in air	7 kg	3.5 kg
• Weight in water	5.1 kg	2.8 kg
• Cable length	0.6 m (customized as required)	0.6 m (customized as required)

